



We put space to work.

Item # _____

Job _____

Stainless Steel / Metroseal Gray Pan Racks

Metro Super Erecta® Stainless/Metroseal Pan Racks offer stainless steel wire slides with Metroseal Gray epoxy structure for the perfect balance of performance and affordability

Features & Benefits:

- Type 304 stainless steel slides
- Polymer rust-resistant casters.
- 12-year Corrosion warranty on posts and frames
- End and Side Load models
- Available 1 ½" and 3" Slide Spacing
- Lightweight and easily maneuverable
- Locking casters secure unit in place
- Quick, easy assembly
- Compact pack, UPS Shippable



Metroseal Gray™

12-YEAR CORROSION WARRANTY

Metroseal Epoxy Coating with Microban.



End-Load



Side-Load



Stainless Steel / Metroseal Gray Pan Racks

13.42S



InterMetro Industries Corporation
North Washington Street, Wilkes-Barre, PA 18705
Product Information. U.S. and Canada: 1.800.992.1776
Outside U.S. and Canada: www.metro.com/contactus

L02-261
Printed in U.S.A. 2/23

Information and specifications are subject to change without notice. Please confirm at time of order.

Copyright © 2023 InterMetro Industries Corp.

Job _____



We put space to work.

Stainless Steel / Metroseal Gray Pan Racks

Specifications:

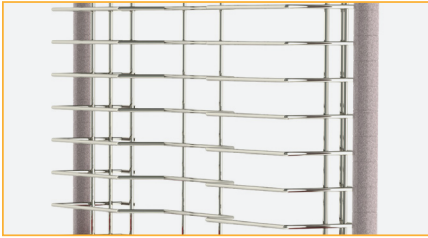
- **Slides:** Type 304 Stainless Steel Wire
- **Frames, Posts:** MetroSeal 4 Epoxy
- **Caster:** 5" dia. Rust Proof Polymer Stem Casters, 2 with brakes
- **Height of all racks:** 69 in. (1750 mm)



Post connector.

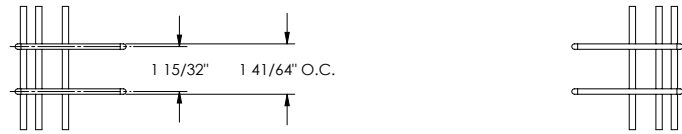
| Width / Length (in.) (mm) | Slide Spacing (in.) (mm) | Rack Type | Pan Capacity | | Cat. No. |
|------------------------------|-----------------------------|-----------|--------------|---------------|---------------|
| | | | No. Pans | (in.) (mm) | |
| 23.25x28.75 552x685 | 1.4 35.6 | End-Load | 40 | 18x26 457x660 | RE1K4S |
| 23.25x28.75 552x685 | 3 76 | End-Load | 20 | 18x26 457x660 | RE3K4S |
| 20.75x31.25 495x762 | 1.4 35.6 | Side-Load | 40 | 18x26 457x660 | RS1K4S |
| 20.75x31.25 495x762 | 3 76 | Side-Load | 20 | 18x26 457x660 | RS3K4S |

Weight Load Capacity: 30 lbs. (13.6kg) per level; 200 lbs. (91kg) per rack.

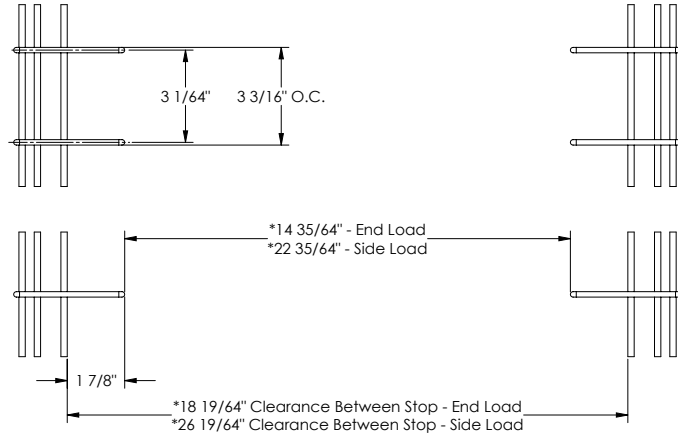


Type 304 stainless steel slides.

RE1K4S/RS1K4S Slide Spacing



RE3K4S/RS3K4S Slide Spacing



an Ali Group Company



The Spirit of Excellence